





# Roxbury Historic Depot

## Public Meeting #1

April 5, 2017

Hoffmann, Architects, & Planners



# Hoffmann, Architects and Planners

## Principals

Peter R. Hoffmann, AIA, NCRB

Dana Hochberg, RA, NCARB

Heather Fagans, M. Arch., NCARB

# Station Overview: Existing Building



Milroy Train Station









Milton Train Station

## Status Update

- Documentation of existing structure
- Site investigations
- Title search complete, survey complete
- NYS Office of Parks, Recreation, and Historic Preservation update
- Initial use thoughts



# Building Analysis: Structural Concerns











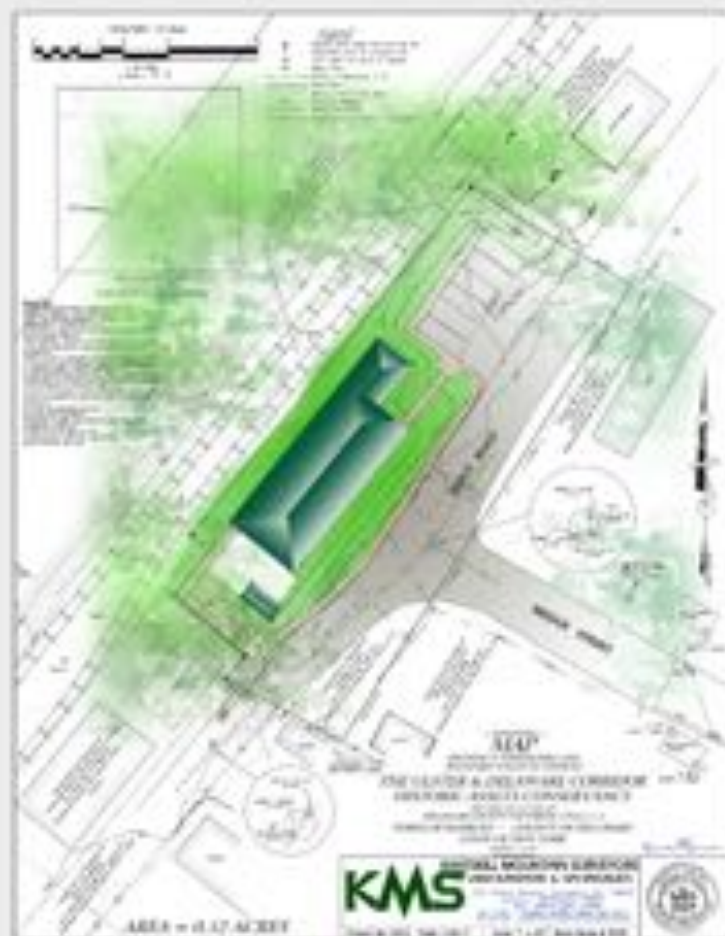


# SHPO Meeting

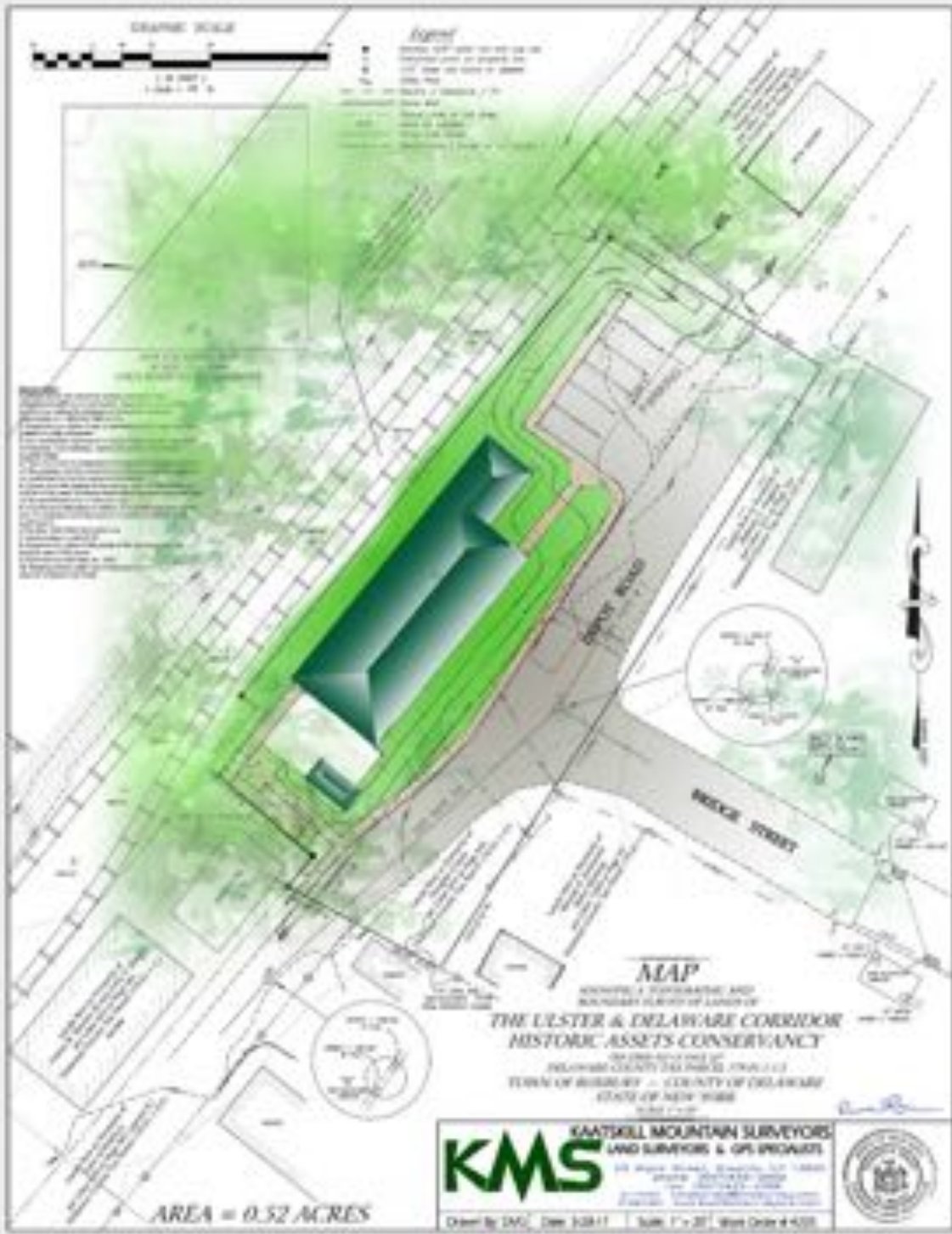
- |                   |                           |
|-------------------|---------------------------|
| 1. PRESERVATION   | Think "stabilize"         |
| 2. RESTORATION    | Think "accurately depict" |
| 3. REHABILITATION | Think "compatible uses"   |
| 4. RECONSTRUCTION | Think "clone"             |

Based on Site Meeting with SHPO, Historic Society, and County Representatives, REHABILITATION is recommended. Most options are available for use.

# Existing Site Survey







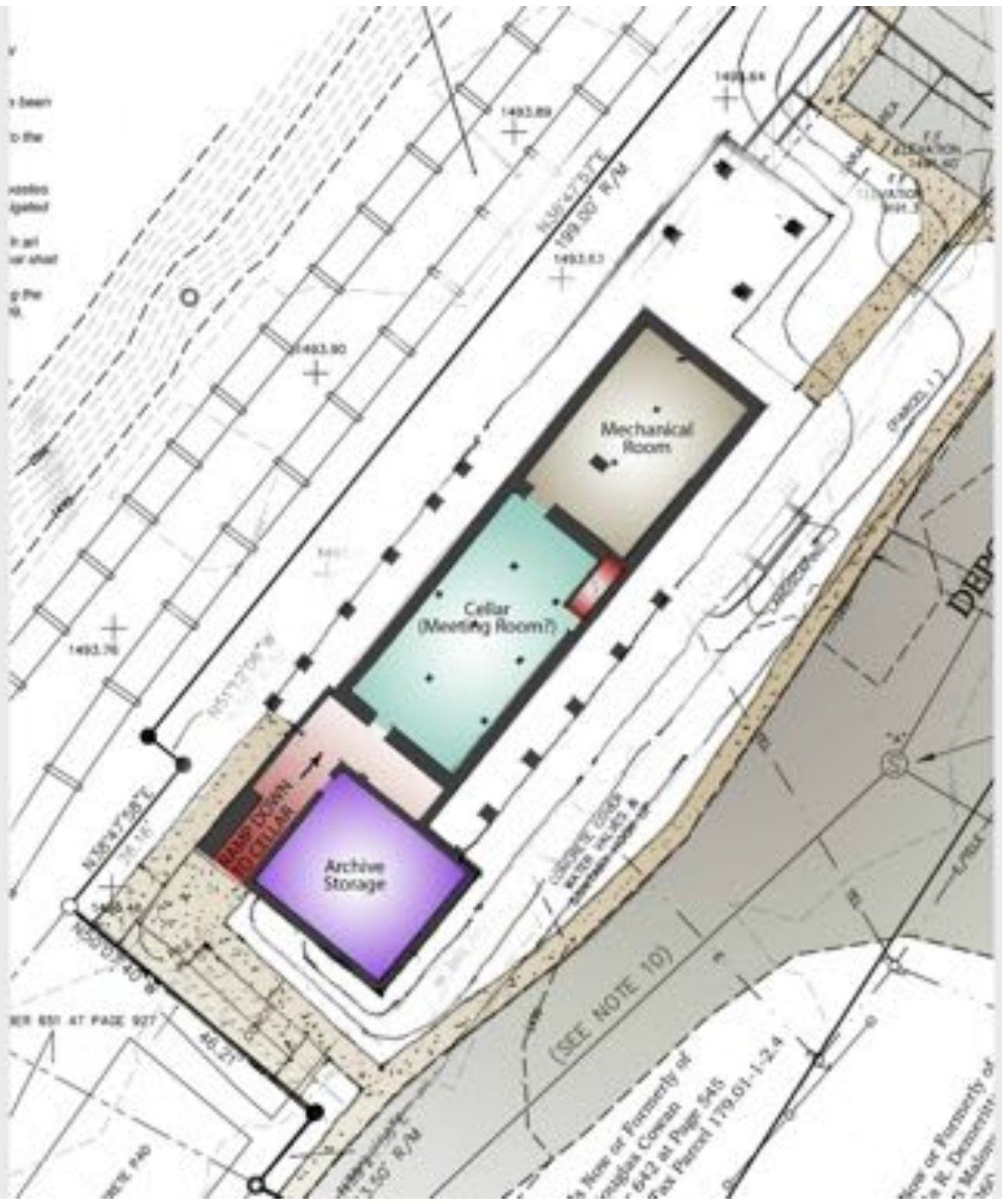
# Station Renovation Diagrams New











# Station Renovation Diagrams New



< D&URR to Arkville

D&URR to Hubbell Cors. >



DEPOT STREET



BRIDGE STREET

Roxbury Depot Restoration and Museum Project  
Ulster & Delaware Railroad Historical Society  
PROPOSED SITE PLAN



## Discussion

1. Uses for Freight Room
2. Uses for Decks and Portico
3. Uses for Cellar

# Hoffmann, Architects and Planners

## Principals

Peter R. Hoffmann, AIA, NCRB

Dana Hochberg, RA, NCARB

Heather Fagans, M. Arch., NCARB